

## Gibbs 2017 Sponsors

We thank our generous sponsors for their contributions to the 31<sup>st</sup> Gibbs Conference.



**Beckman Coulter**



**Cambridge Isotope Laboratories**



**Edinburgh Instruments**



**Genentech**



**ISS, Inc.**



**Jasco**



**Malvern**



**Nanotemper Technologies**

## Gibbs 2017 Sponsors (continued)

We thank the following sponsors for their generous contributions to this year's conference:



**New England Biolabs**



**Wyatt Technology**



**Penn State University  
Department of Chemistry**



**Towson University Fisher College of  
Science and Mathematics**



**Texas State University Department  
of Chemistry**



**UMMC Department of Biochemistry**



**Unchained Labs**

Muscle up with the

# HUNK



- Quantify stability with  $\Delta G$
- Aggregation pathway & propensity with  $\Delta G_{\text{trend}}$

**UNCHAINED**  
LABS

# When proteins matter.

Quickly and accurately analyze binding affinity, protein stability and sample quality with just a tiny amount of sample.



**NANO TEMPER**  
nanotempertech.com



**Malvern**  **PANalytical**

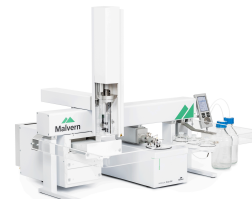
[www.malvern.com](http://www.malvern.com)  
[www.panalytical.com](http://www.panalytical.com)

## The leading biophysical characterization source.

Particle Interactions  
Dynamic Light Scattering  
Electrophoretic Light Scattering  
Static Light Scattering  
Melting Points  
Stability Profile  
SEC/MALS  
 $R_g$

Particle Morphology  
Analytical Imaging  
Raman Spectroscopy  
Oligomeric Distribution  
Molecular Weight  
Viscosity  
Stokes Radius  
 $[\eta]$   
 $k_D$

Aggregation Mechanisms  
Particle Counting  
Resonant Mass Measurement  
Nanoparticle Tracking Analysis  
Secondary Structure  
Binding Affinity  
Binding Stoichiometry  
 $T_M$   
 $T_{Agg}$



# We don't believe in TMI.

Our newest fluorescence software is designed for **TMA** — powerful **thermal melt anisotropy** data sets — providing deeper analysis and understanding of complex systems. In research, there is no such thing as too much information!

- Get high-quality data fast, with exceptional sensitivity.
- Tailor ramping and data collection for efficiency and accuracy.
- Automatically collect and save full-wavelength scan data for  $I_w$ ,  $I_{vh}$ ,  $F_{sum}$ , anisotropy and polarization at each T.
- Control fluorescence, CD and UV-Vis/NIR thermal melt systems from one software platform, Spectra Manager™.

Check out the Capital University/JASCO poster to see results — and stop by our booth to view the program in action!



Spectroscopy | Chromatography | Biological and Material Sciences

[www.jascoinc.com](http://www.jascoinc.com)

